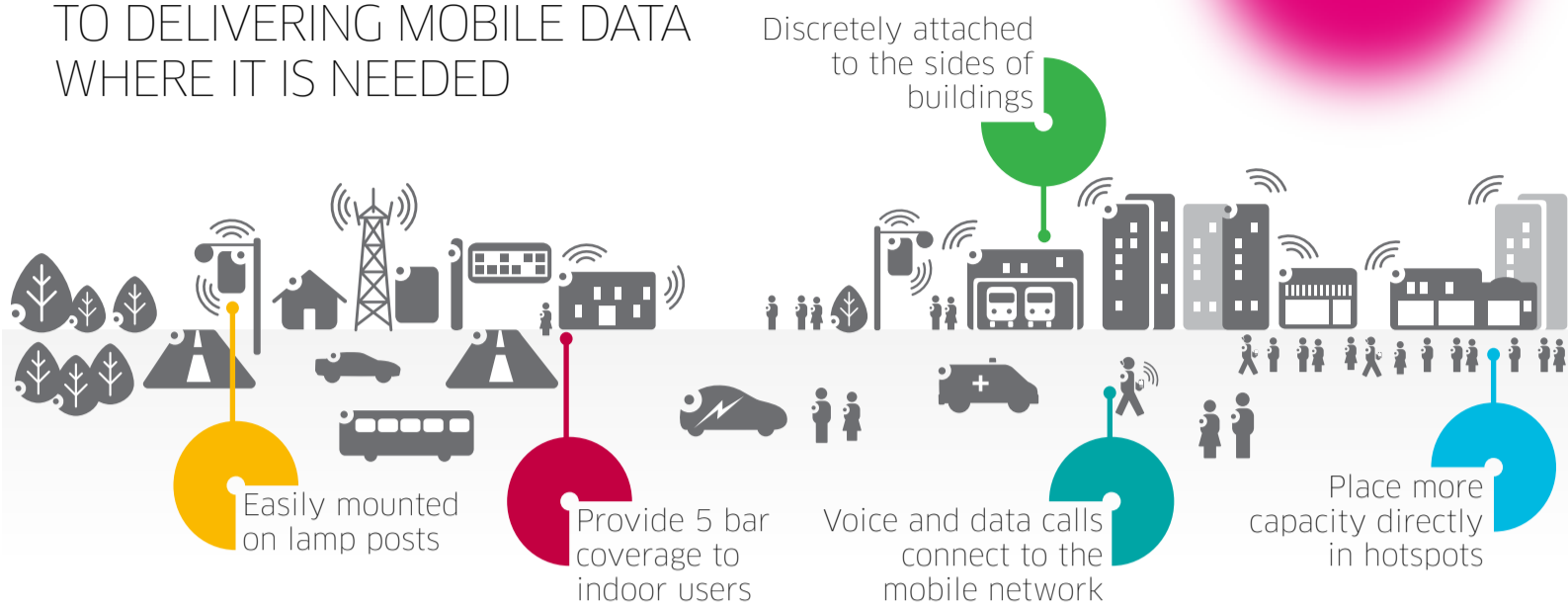


WHY SMALL WILL MAKE A BIG DIFFERENCE

METRO CELLS HOLD THE KEY TO DELIVERING MOBILE DATA WHERE IT IS NEEDED

How do we get 5 bar coverage everywhere?

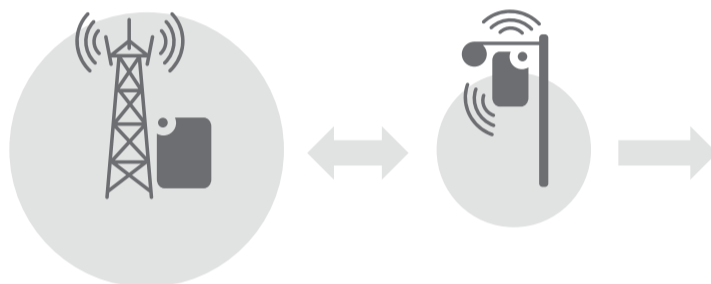


WHAT ARE METRO CELLS?

Metro cells are tiny cell towers that expand the reach of the mobile network and bring targeted capacity relief to congested mobile networks. Like a femtocell on steroids, they are easy to install, quick to turn up and deliver multimegabit connectivity for a fraction of the cost of a macro cell alone.

76%
OF US SMARTPHONE USERS WATCH & SHARE VIDEO ENTERTAINMENT

How will we address 25x capacity growth?



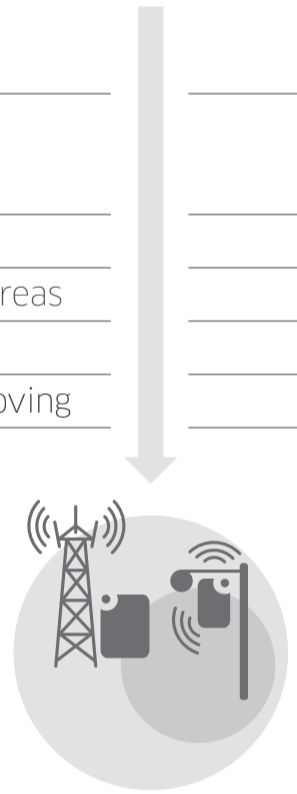
38%
TCO SAVINGS FROM METRO + MACRO

THE DIFFERENCE BETWEEN

	MACRO CELLS	METRO CELLS
Max users per cell	2,000	200
Max range	30km	200 meters in urban areas
Max transmit power	60 W	5 W
User types	Fast moving	Stationary and slow moving

COMBINE TO MAKE THE HETEROGENEOUS NETWORK

1 LTE metro cell per macro provides 2x capacity gain in hotspots
Together metro + macro work as one mobile network to provide a seamless user experience



BENEFITS BUSINESS

Most economic way to address 25x increase in bandwidth demand
Enable presence-based services
Improve customer satisfaction

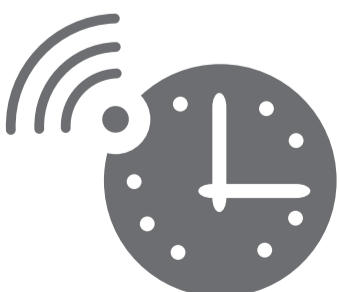
OPERATOR

Targeted capacity relief
Quick to deploy
Support 3G + 4G + Wi-Fi®
Unobtrusive design

USER

Reduced hotspots
Better indoor coverage
Faster data speed
Longer battery life

RAPIDLY INSTALLED AND COMMISSIONED



- 1 Mount on a lamp post, street sign, side of a building, or indoor mall
- 2 Connect to power and to fixed, Wi-Fi, or microwave backhaul
- 3 Turn the metro cell on. It automatically self-configures and self-optimizes to its surrounding network using SON technology

INSTALLED AND INTEGRATED IN A MATTER OF HOURS